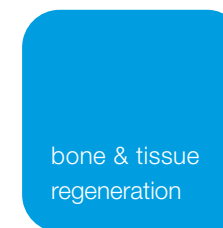


# mucoderm®

## 3D-STABLE **SOFT TISSUE GRAFT**



botiss biomaterials GmbH  
Hauptstr. 28  
15806 Zossen  
Germany

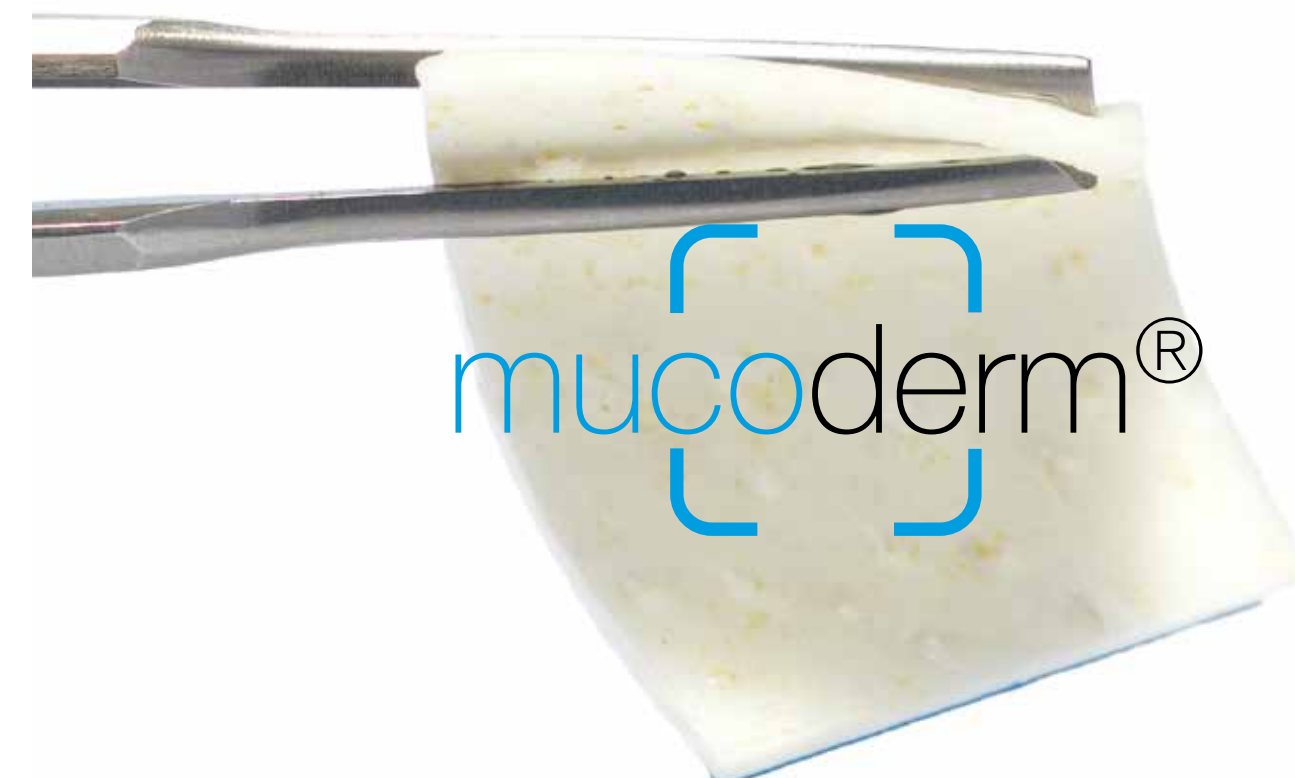
Tel.: +49 33769 / 88 41 985  
Fax: +49 33769 / 88 41 986

contact@botiss.com  
facebook: botissdental  
instagram: botiss\_dental

botiss.com

Rev.-Nr.: IMDen-02/2023-10

# INSIDE



# mucoderm®

**Origin:** porcine dermis

**Composition:** native acellular collagen

**Size:** 15 × 20 mm / 20 × 30 mm  
/ 30 × 40 mm / Ø 10 mm

**Thickness:** 1.2 - 1.7 mm

**Integration time:** 6-9 months

**Feature:** fully resorbable matrix



# muco<sup>derm</sup>®

A SUCCESSFUL SOLUTION FOR  
SOFT TISSUE AUGMENTATION

muco<sup>derm</sup>® is a natural, porous, acellular, and completely resorbable collagen matrix for soft tissue augmentation. muco<sup>derm</sup>® supports early revascularization and soft tissue integration. The uniform architecture of the collagen fibers and the biological unique properties make muco<sup>derm</sup>® a valid alternative to autologous connective tissue grafts.

**>12 years**

clinical experience

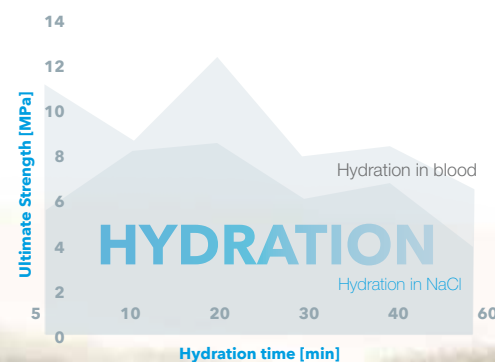
## HIGH SAFETY

The multi-stage purification process ensures the removal of all non-collagenous proteins, cells, potential immunogens as well as bacteria and viruses. Gamma irradiation further guarantees sterile packaging of the product.



## EASY HANDLING AFTER HYDRATION

Optimal hydration time 10-20 minutes for maximized biomechanical stability<sup>1</sup>.



muco<sup>derm</sup>®: CE approved  
according to 93/42/EEC

**>130**  
scientific contributions  
(05/2023)

### Prof. Dr. Dr. h.c. Adrian Kasaj, M.Sc.:

Based on my clinical experience and research, I have found out that the muco<sup>derm</sup>® matrix is a viable, highly safe and patient-friendly alternative to palatal donor tissue in root coverage procedures. The accomplished root coverage and thickening of the marginal tissue is characterized by a natural looking and aesthetic appearance meeting the expectations of the patients.

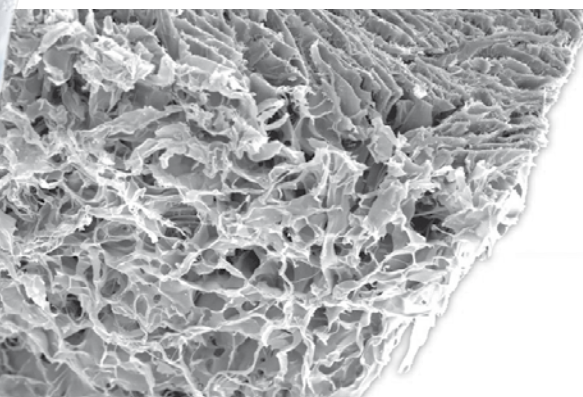
## IMPROVED AESTHETICS & PATIENT SATISFACTION

The three-dimensional collagen matrix promotes early revascularization and optimal integration into the surrounding tissue, ensuring a successful aesthetic outcome<sup>2,4,5</sup> with reduced pain and patient discomfort<sup>11</sup>.

## HOMOGENOUS 3D MATRIX

Efficient scaffold for the proliferation of a wide variety of (soft-tissue) cells and excellent guide for blood vessel growth<sup>2,3</sup>.

Reliable shape and thickness stability<sup>9</sup>



## BRINGING BACK YOUR PATIENT'S SMILE

### Prof. Dr. med. dent., Dr. h.c. mult. Anton Sculean, M.Sc.:

In many cases I use muco<sup>derm</sup>® as an alternative for connective tissue grafts. Due to its high biocompatibility and excellent mechanical properties muco<sup>derm</sup>® is perfectly suitable for the tunneling procedure. Moreover, it serves also as an ideal carrier for biologic active substances such as Emdogain® or other growth factors.

### Prof. Giovanni Zucchelli, DDS, PhD:

The adjunctive use of muco<sup>derm</sup>® and Emdogain® to the coronally advanced flap allows to increase soft tissue thickness and improve the quality of attachment between the soft tissue and the root. Both of these factors are critical for the long-term stability of the root coverage outcome.

## ADVANTAGES:

- Reduced surgical operating time<sup>9,10,11</sup>
- Reduced surgical & post-surgical bleeding<sup>9,10</sup>
- Reduced morbidity<sup>9,10,11</sup>

**Clinical success**  
Root coverage  
**up to 91%**<sup>6,7,11</sup>  
(Miller class I-III)

Find handling tips  
and surgical instructions  
in the „muco<sup>derm</sup>®  
surgical guide“:  
botiss.com



### botiss webinars:

- Attila Horváth
- Bálint Molnár
- Alessandro Rossi
- Massimo Frosecchi
- Adrian Kasaj
- Dávid Botond Hangyási
- and many more...

# Clinical Application

Clinical cases with muco<sup>derm</sup>® on  
**BOTISS.COM**

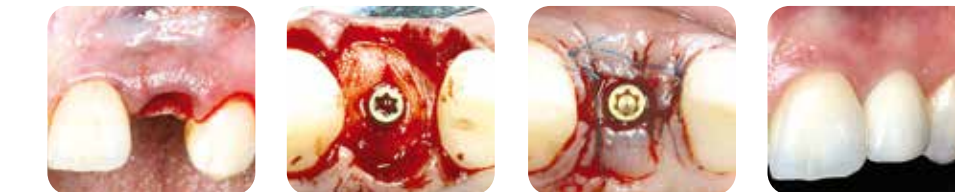
## RECESSION DEFECTS PROF. A. SCULEAN & DR. R. COSGAREA, UNIVERSITY OF BERN, UNIVERSITY OF MARBURG, SWITZERLAND, GERMANY



Covering of multiple recessions with the modified coronally advanced tunnel (MGAT) technique

18 months

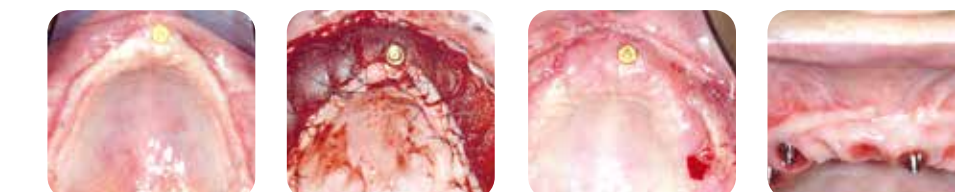
## SOFT TISSUE THICKENING DR. A. PUISYS, VILNIUS, LITHUANIA



Soft tissue thickening at immediate implant placement

18 months

## VESTIBULOPLASTY PROF. P. WINDISCH & DR. B. MÓLNAR, SEMMELWEIS UNIVERSITY BUDAPEST, HUNGARY



Full arch reconstruction of insufficient vestibular depth and lack of keratinized tissue

6 months

## GET IN TOUCH

muco<sup>derm</sup>@botiss.com

1: Kasaj et al. Clin Oral Invest. 2016; 20(6):1303-15. Epub 2015.  
2: Pabst et al. Odontology. 2016; 104(1):19-26.  
3: Pabst et al. J Periodontol Res. 2014; 49(3):371-81. Epub 2013.  
4: Rothamel et al. Head Face Med 2014; 10: (10).  
5: Zafropoulos et al. 2016. J Indian Soc Periodontol; doi:10.4103/0972-124X.181245  
6: Cosgarea R. 2016. Quintessence Int. 47(9):739-47.

7: Ciešlik-Wegemund. 2016 J Periodontol. 17:1-15.  
8: Schmitt et al. J Clin Periodontol. 2016; 43(7):809-17.  
9: Nocini et al. 2014. J Craniofac Surg; 25(3):799-803.  
10: Kasaj et al. 2014. Quintessence Int. 2016; 47(9).  
11: Vincent-Bugnas et al. 2017. J Esthet Restor Dent. 1-7.  
12: Scarscia A., personal communication 2016; data to be submitted, Rome, Italy.