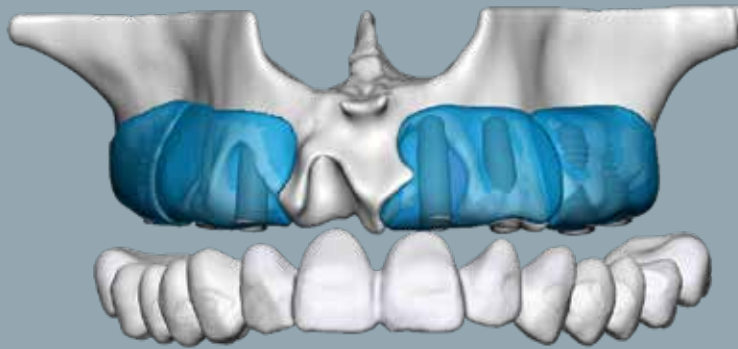


Workflow

maxgraft[®] bonebuilder



Workflow

maxgraft® bonebuilder



CUSTOMIZED allogenic bone block

1. Patient details

The clinician can upload patient CT/CBCT scans on

www.botiss-bonebuilder.com.

The 3D-design at botiss requires single-frame data images in DICOM

format. The botiss CAD designers support the upload via telephone:

+ 49 (0)30 20 60 73 98 -35 / -26 or via email: bonebuilder@botiss.com

2. Block design

The botiss product specialists design the virtual customized bone block with a 3D-planning software based on the radiographic data.

This process is done in interactive exchange with the clinician.



3. Design check of the 3D-planning

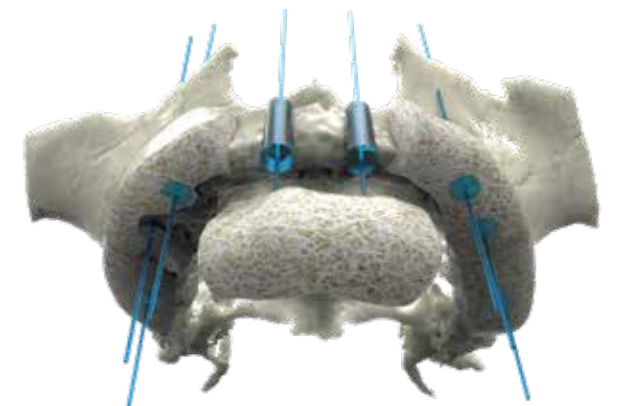
The computer designed maxgraft® bonebuilder block provided as a 3D-PDF is checked by the clinician, who may request modifications. After the design is finalized, the clinician approves it.

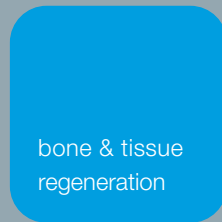
4. Order of maxgraft® bonebuilder

The production starts after the release of the design. botiss requires order placement via an order form which can be found on the specific order webpage.

5. Production of maxgraft® bonebuilder

The design data is transmitted to the Cells+Tissuebank Austria gGmbH, the responsible tissue bank located in Krems, Austria. Each individual maxgraft® bonebuilder is milled from a processed allogenic cancellous block. After submission of the order form, the maxgraft® bonebuilder is delivered in approximately 4 weeks.





maxgraft® bonebuilder enables complex horizontal and vertical augmentation without the necessity of harvesting autologous bone.

Donor site morbidity, operation time and costs can be significantly reduced.

www.botiss-dental.com
www.botiss-bonebuilder.com
www.botiss.com